

# UNITEC

# WEAR PLATE

FROM UNITED ALLOYS

RESEARCH AND DEVELOPMENT INC.



## PREDEPOSITED HARDFACING

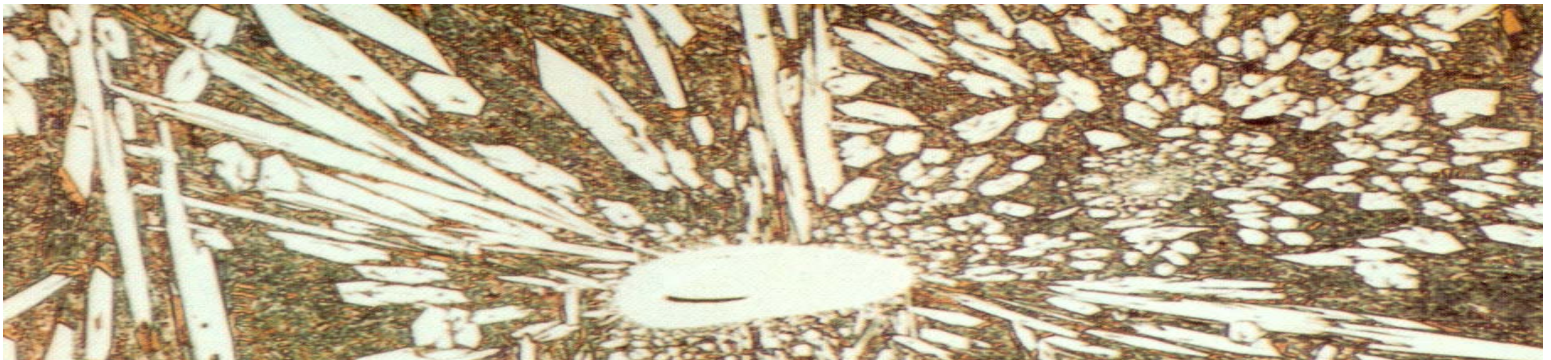
FOR DRAMATIC WEAR  
IMPROVEMENTS IN  
AREAS SUBJECT TO:

- \* SLIDING ABRASION
- \* METAL TO METAL WEAR
- \* ABRASION AND IMPACT WEAR
- \* ABRASION IN CORROSIVE MEDIA
- \* COMPRESSION WEAR

# UNITEC WEAR PLATE

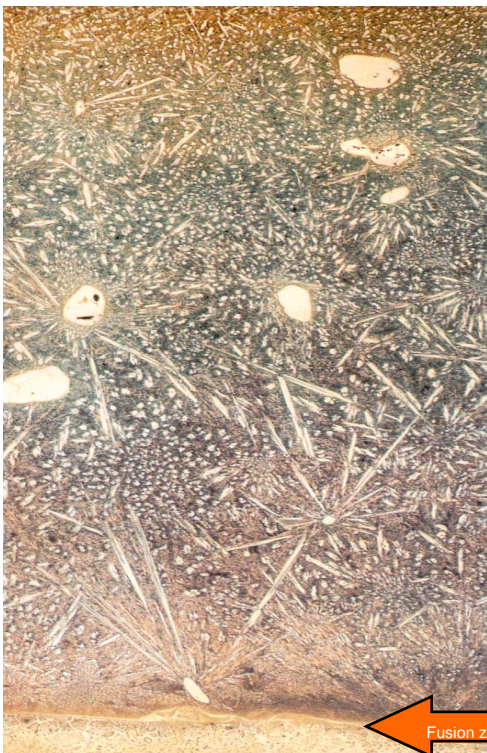
## OUR PROCESS IS THE KEY TO LONGER WEAR LIFE

UNITEC PLATES are manufactured by means of a unique Hardfacing process, which has been developed for this Special application. The structure consists of primary chromium carbides in a eutectic matrix with eutectic chromium carbides. Due to low dilution with the base material, very low penetration of temperature and high alloyed powder, a unique structure is the result. Compared to hardfacing layers welded with traditional processes the structure of the hardfaced section contains a high percentage of evenly distributed chromium carbides. This, in fact is the miracle of the longer life of UNITEC PLATES in comparison To plates being produced with conventional sub arc manner.



### THE UNITEC DIFFERENCE IS CLEAR

THE 1/4 ON 1/4 PLATES BELOW SHOW FACTORS OF BASE METAL DILUTION



UNITEC

The structure of hardsurface layer shows a high content of primary chromium carbides already close to the base metal.

A further important characteristic of quality is non-melted powder particles, Which proves that the welding material Is saturated with components of the alloy.

Fusion zone



SUB ARC

The dilution with Base metal reduces the chromium and carbon content. This leads to a Lower percentage of primary Chromium carbides. These Exist only close To the surface.

Fusion zone



## *WIDE RANGE OF INDUSTRY POWER GENERATION:*

- \* VENTILATORS
- \* PIPE LINERS
- \* CHUTE LINERS
- \* VIBRATORY FEEDERS
- \* BUNKERS



## *IRON AND STEEL INDUSTRY:*

- \* CHUTES
- \* SCREENS
- \* BUNKERS
- \* BLAST FURNACE BELLS
- \* CHANNELS



## *MINING AND SAND & GRAVEL:*

- \* EXCAVATOR BUCKETS
- \* BUNKERS
- \* CHUTES
- \* LOADERS
- \* SCREW CONVEYORS



## *CEMENT INDUSTRY:*

- \* CLINKER CHUTES
- \* CYCLONES
- \* VENTILATORS
- \* CHUTES
- \* SEPARATORS

*AND MANY MORE CALL FOR*